



# Regulator Systems

MANUFACTURER OF AIR CONDITIONING CONTROLS AND INSTRUMENTATION

## DBET/DBMT



### TECHNICAL FEATURES

Sensitive elem.	liquid-filled coiled copper bulb
Contacts	dust-tight microswitches with switching
Switch capacity	contacts (heat/cool)
Differentials	15 (8) A, 24...250 Vac
Working temperature	fixed or adjustable (see schedule)
Storage	-35...+65 °C
Housing	-20...+70 °C
DBET	DBET: Byblend base, ABS cover
DBMT	ABS Makrolon
Size	DBET: 108 x 70 x 72 mm
DBMT	200 x 120 x 74 mm
Protection	IP65, class I

### FUNCTIONS

Room temperature control in:

- single or multi-stage heating systems;
- single or multi-stage cooling systems;
- single or two-stage heating and cooling systems with dead zone.

Models with set point adjustment by knob upper or under the cover and range reset.

### APPLICATIONS

Well-suited for heating, cooling and air conditioning systems in dusty, damp and strong polluted areas: industrial areas, commercial buildings, storage room, garages, machine rooms, factories, greenhouses and agricultural installations.

### ELECTRICAL WIRINGS

#### Heating

Connect red (common) to blue terminal, as shown in fig. 2; while rising of the temperature, the contacts open, in sequence, the stages from the last to the first.

#### Cooling

Connect red (common) to white terminal; while dropping of the temperature, the contacts open in sequence the stages from the first to the last. The respective free contact closes simultaneously (signal contact).

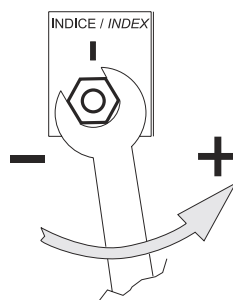


fig. 1

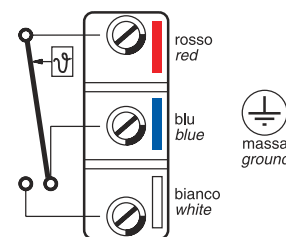


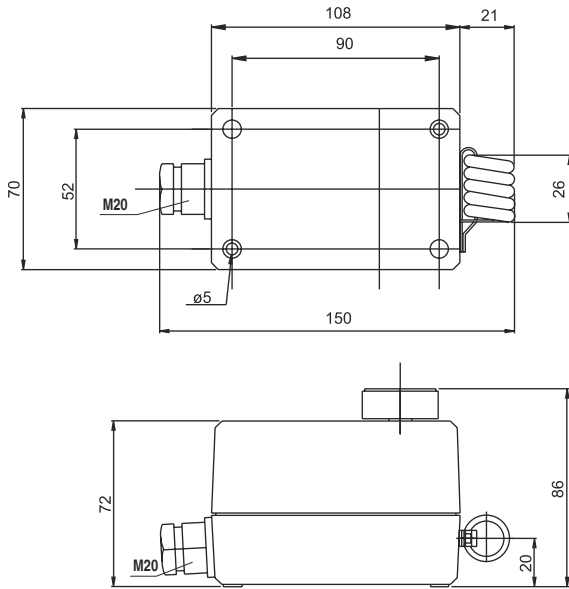
fig. 2

Range	Type	Stages	Diff. in stage	Diff. betw stages	Max bulb temp.	Special Versions
-30...+30	DBET-22	1	2...15		60	U
-30...+30	DBET-23	1	1		60	U
-30...+30	DBET-22/2	2	1	2...10	60	U
-30...+30	DBMT-412	4	1	1	60	U (*)
0...+60	DBET-26	1	2...15		75	U
0...+60	DBET-27	1	1		75	U
0...+60	DBET-26/2	2	1	2...10	75	U
0...+60	DBMT-413	4	1	1	5	U (*)

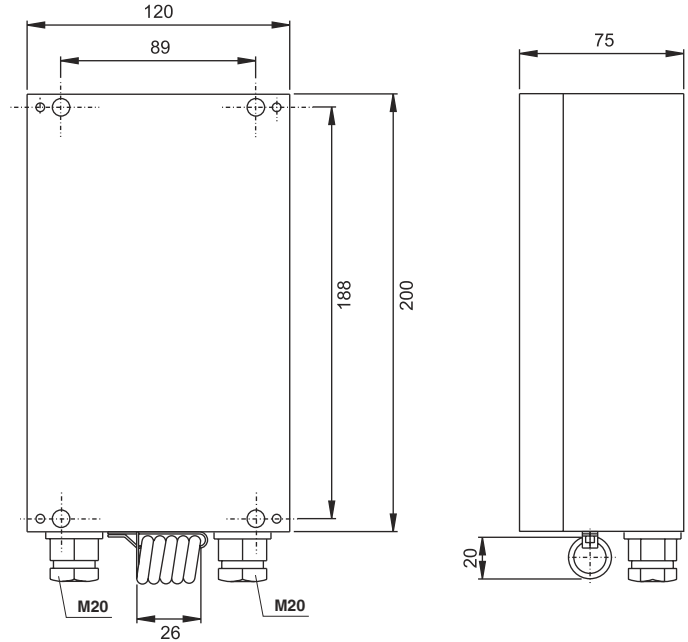


## DBET/DBMT

### OVERALL DIMENSIONS



DBET



DBMT